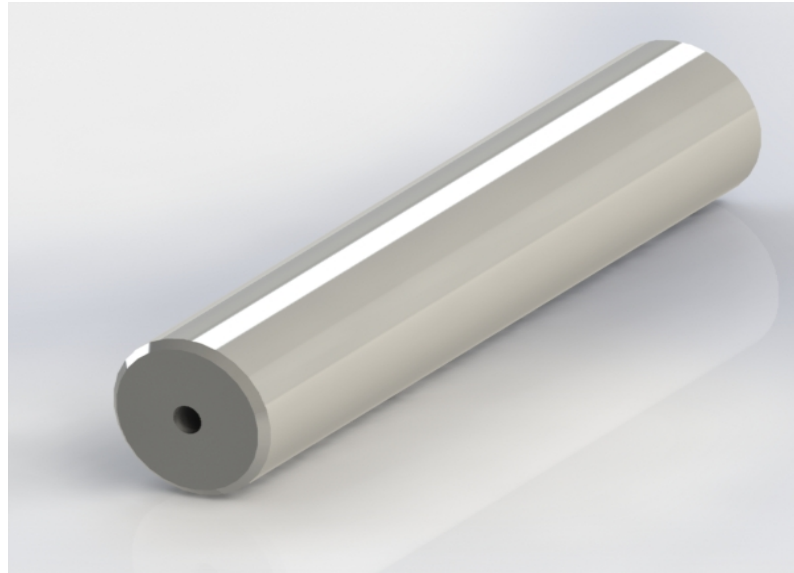
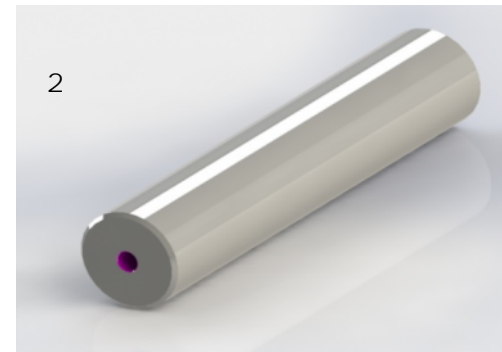
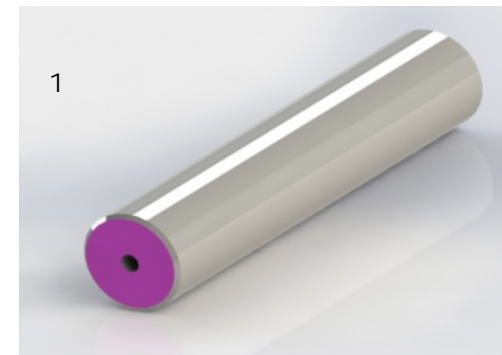
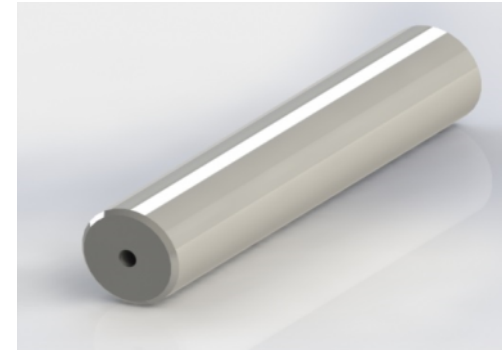


Demoteil Drehen 2015-2 / **Innenausdrehen mit Hardline 58 HRc**  
 demonstration model turning 2015-2 / **internal turning with Hardline at 58 HRc**

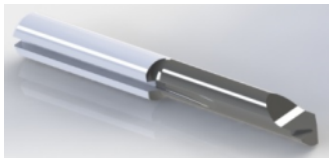


**Material:**  
 1.2379  
 X153 CrMoV12  
 Ø 20 x 100 mm  
 58±1 HRc



**Werkzeug 1 / tool 1:**

**Hardline L050.4-16/XC2A-NH**

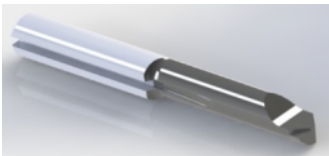


**Bearbeitung:** *Plandrehen/facing*

<b>Schnittdaten / Cutting data:</b>	
Schnittgeschwindigkeit / cutting speed	90 m/min
Vorschub / feed rate	0,04 mm/U

**Werkzeug 2 / tool 2:**

**Hardline L050.4-16/XC2A-NH**



**Bearbeitung:** *Innenausdrehen auf 4H7/internal turning 4H7*

<b>Schnittdaten / Cutting data:</b>	
Schnittgeschwindigkeit / cutting speed	90 m/min
Vorschub / feed rate	0,05 mm/U